

Outstanding Features

Attractively compact design requires no brackets.

Easy H-3/H-3WP installation on standard gang-boxes.

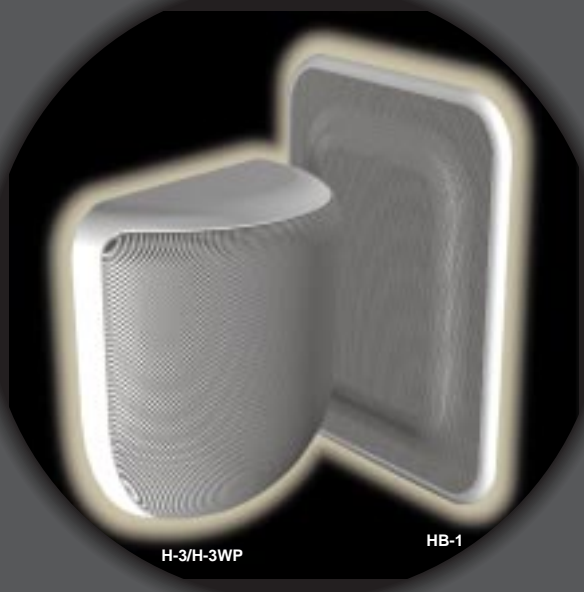
Controlled H-3/H-3WP coverage areas with more comprehensive audio dispersion.

H-3/H-3WP come with powerful neodymium magnet cone speakers and tweeter.

Paintable grilles match and enhance interior decor.

Weatherproof H-3WP model available.

Thin HB-1 design is ideal for use in 2 x 4 frame construction.



Specifications

Model No.	H-3/H-3WP
Enclosure	Sealed type
Speaker Components	Low frequency: 4" x 2 Woofer (neodymium magnet), High frequency: Dome Tweeter (neodymium magnet)
Impedance	8Ω or 16Ω 100V line: 330Ω (30W), 670Ω (15W), 1.3kΩ (7.5W) 70V line: 170Ω (30W), 330Ω (15W), 670Ω (7.5W), 1.3kΩ (3.75W)
Sensitivity	89dB (1W/1m, 2PI space)
Power Handling	150W (50-20,000Hz, continuous program/8Ω), 50W (50-20,000Hz, continuous pink noise/8Ω)
Rated Input	30W (16Ω, high impedance)
Frequency Response	100-20,000Hz (-10dB, 2PI space)
Input Connector	Removable screw terminal, 2 pairs of (+)/(-) (for loop-through termination)
Material/Finish	H-3: Enclosure: Fire-resistant ABS resin, black Grille: steel plate, white paint/Grille Frame: Fire-resistant ABS resin, white/Base Frame: steel plate H-3WP: Enclosure: Fire-resistant ABS resin, black Grille: stainless plate, white paint/Grille Frame: Fire-resistant ABS resin, white/Base Frame: stainless plate
Dimensions	295 (W) x 318 (H) x 129 (D)mm
Weight	3.3kg (including base frame)
Accessory	Base Frame x 1

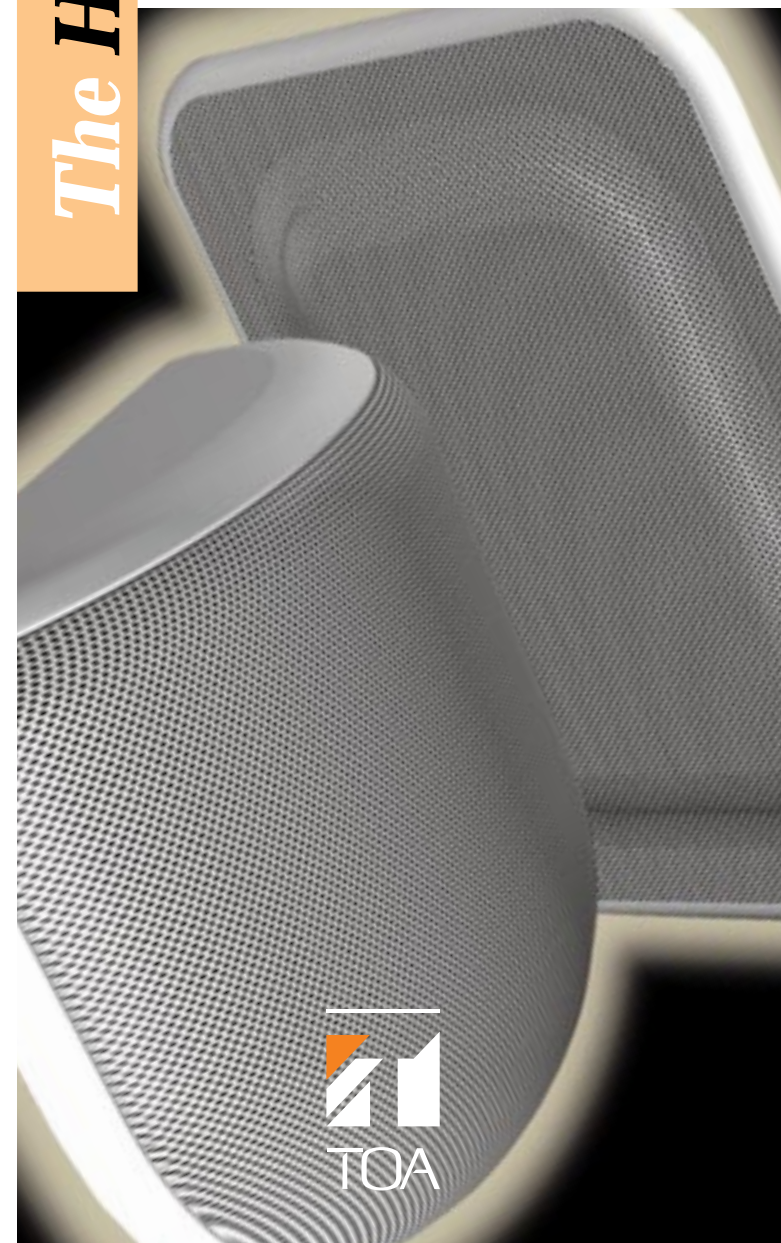
Model No.	HB-1
Enclosure	ASW (Port Radiation)
Speaker Component	8" Woofer
Impedance	8Ω
Sensitivity	91dB (1W/1m, 2PI space)
Power Handling	240W (40-200Hz, continuous program), 80W (40-200Hz, continuous pink noise)
Frequency Response	45-200Hz (-10dB, 2PI space)
Input Connector	Removable screw terminal, 2 pairs of (+)/(-) (for loop-through termination)
Material/Finish	Enclosure: steel plate, black paint Grille: steel plate, white paint/Grille Frame: Fire-resistant ABS resin, white
Dimensions	430 (W) x 544 (H) x 135 (D)mm
Weight	11kg (including front grille, mounting bracket)
Accessory	Mounting bracket x 1
Option	MT-S0601 Matching Transformer 60W/30W/15W/7.5W (70V) 60W/30W/15W (100V)

* Specifications are subject to change without notice.

The H Series

Interior Design Speakers H-3/H-3WP HB-1

H Series Speakers complement the design of every FGM/BGM application, while also enhancing its audio appeal.



TOA Corporation

Printed in Japan(003)833-61-640-70



Easy Installation. Precise Audio Aiming. Subtle Design Harmony.

When the appeal of an installation must include the creation of targeted microzones for listening, but the architectural and interior design aesthetics rule out highly visible brackets and mounts, then TOA H Series Speakers are the answer. The subtly appealing H-3 and H-3WP directional speaker units have been designed for easy yet stylishly unobtrusive installation at above head-height, directly onto a wall, from where they can deliver quality audio between as well as directly in front of each speaker unit, in a 180° coverage pattern that eliminates audio dead spaces. And unlike bracket-mounted box-type speakers, the H-3 and H-3WP feature audio with minimum out-of-phase reflection from walls. By painting the uncomplicated and attractive grille just the right color to match the entire decor, the visual appeal rises to the high level of the audio quality. Weatherproof H-3WP models are available for exterior installations.

HB-1 subwoofers can be easily mounted just by using the frame supplied with them. They continue the TOA H Series pattern of a slightly "invisible" unit that provides quality audio while quietly remaining in harmony with the design of the listening space. They have also overcome the conventional woofer's need for a large container in which to produce the sound. The TOA HB-1 woofer unit is housed in a metal frame with walls thin enough to ensure the large interior volume needed for excellent low-frequency audio response, yet with exterior dimensions compact enough that the HB-1 can be flush-mounted into a ceiling, or even into a wall. The metal frame also acts to disperse heat, so both the power of the sound and the durability of the speakers are greatly enhanced.

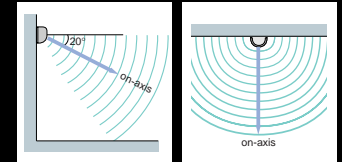
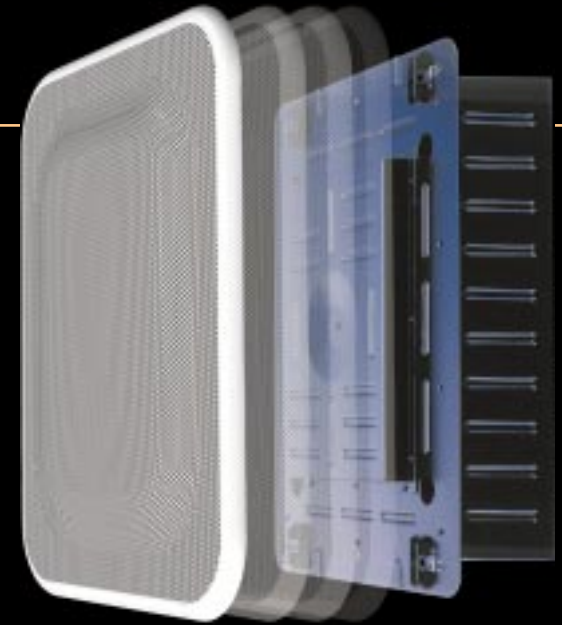
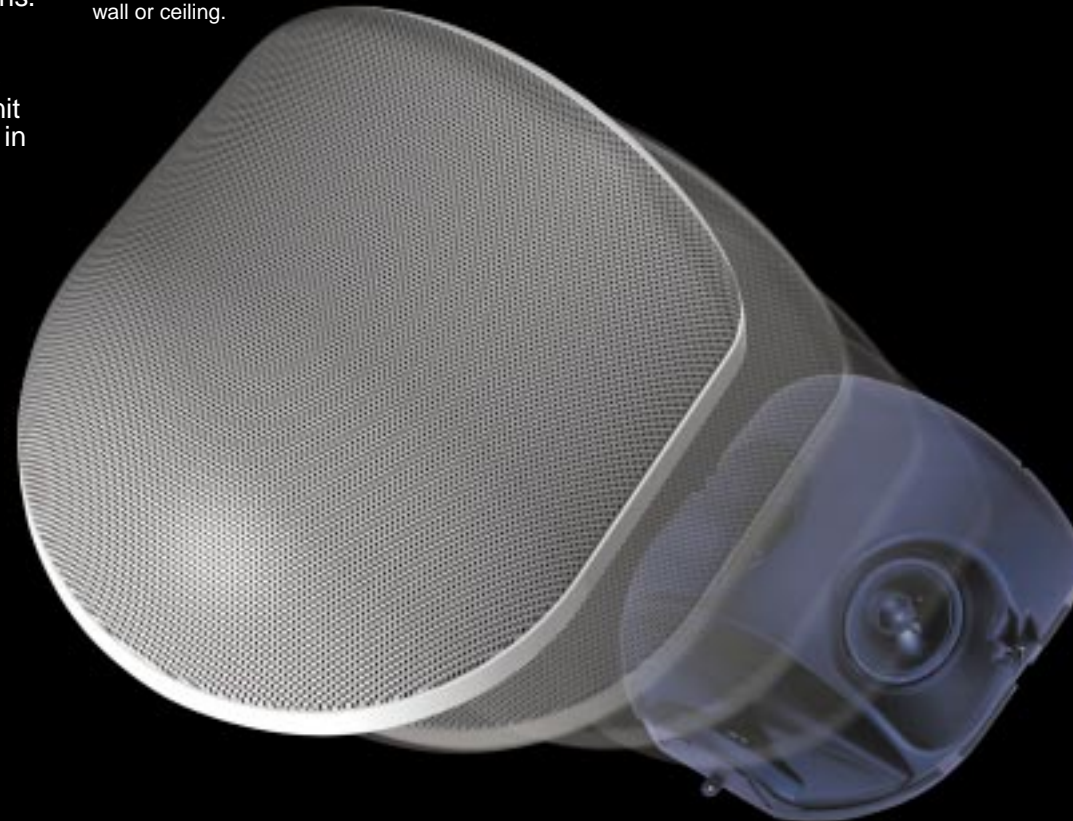
Subwoofers are becoming more popular for their role in rounding out the audio sound in a focused listening space. Now TOA makes it possible to have quality low-frequency response even where there is not enough room for a free-standing subwoofer installation.

H Series Speakers combine fuller audio coverage and unobtrusive visual appeal.

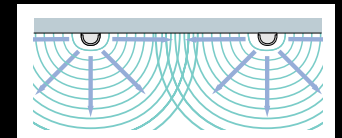
H Series Speakers are ideal for any application where targeted quality audio and an undisturbed interior aesthetic are equally important.

The H-3 and H-3WP woofers and tweeter come with powerful TOA-designed and engineered neodymium magnet drivers. Thanks to the unit's original TOA design, the woofers and tweeters work effectively together to create the widest possible dispersion pattern. Built-in steep-slope crossover circuitry deals effectively with transitions between low and high frequency ranges, for a smooth dispersion pattern and audio response. A transformer is provided to make possible both high- and low-impedance operation.

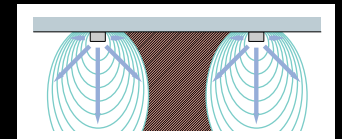
The HB-1 subwoofer combines an high-power 8" woofer that has a 110mm ferrite magnet and an aluminum bobbin, with an acoustic super-woofer featuring acoustical bandpass filtering construction. The short-depth cabinet has just the right dimensions for use with 2 x 4 frame construction, and a simple installation method made possible by new TOA-designed brackets allows optimally easy "blind" flush mounting in a wall or ceiling.



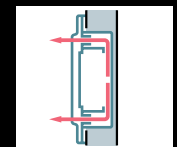
Sound Coverage Area Image



TOA H-3 Speakers ensure ideal audio dispersion both in front of and between speakers.



Conventional speaker dispersion pattern leaves dead sound spaces between speakers.



Thin metal walls on HB-1 subwoofer unit ensure sufficient interior space for low-frequency response, and efficient heat dispersion for enhanced speaker durability.